

## ARTWORK SPECIFICATIONS

### SUPPLIED ARTWORK

Artwork is preferred to be supplied in pdf format.

All images are to be high resolution and embedded.

All fonts need to be outlined.

Fonts required for variable data need to be supplied to us.

We also accept Adobe Illustrator files [.ai] and packaged Adobe InDesign Files [fonts and images must be included].

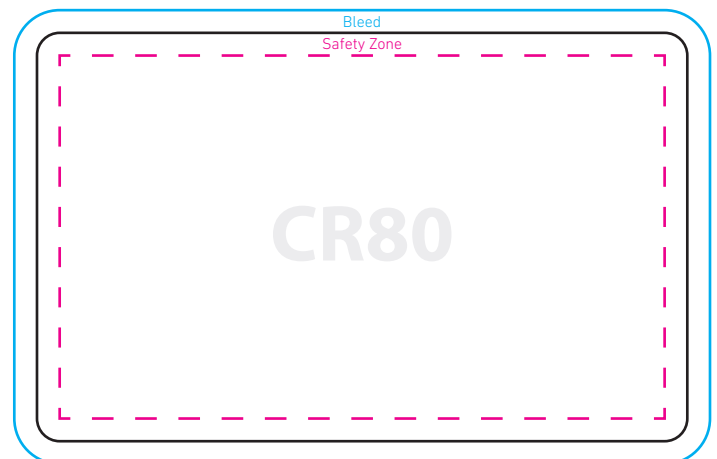
Microsoft Word, Publisher, and Powerpoint files will not be accepted.

Standard **CR80** card size is 86mm x 54mm.

All type, data and images must be at least 4mm away from the edge of the card.  
[See magenta dotted line].

There may be up to 3mm movement during the diecutting process. Borders are not recommended due to this.

A minimum of 3mm bleed is required.  
[See cyan keyline].

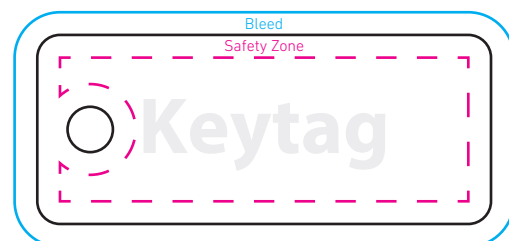


**Keytag** size is 60mm x 25mm.

All type, data and images must be at least 3mm away from the edge of the card.  
[See magenta dotted line].

There may be up to 3mm movement during the diecutting process. Borders are not recommended due to this.

A minimum of 3mm bleed is required.  
[See cyan keyline].



## ARTWORK SPECIFICATIONS

**Combo 1+1** card size is 86mm x 54mm, tag size is 28.5mm x 54mm. [Overall size is 114.5mm x 54mm.]

All type, data and images must be at least 3mm away from the edge of the card.

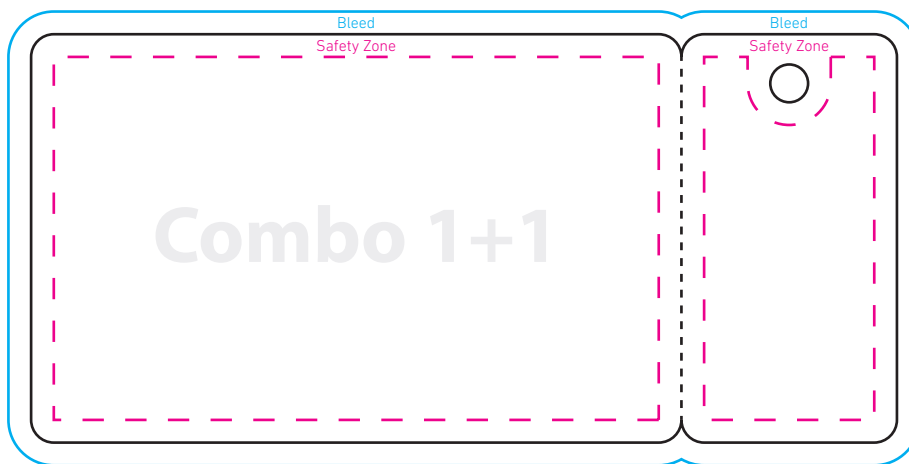
Ensure drill hole area is kept clear of type, data and images.

[See magenta dotted line].

There may be up to 3mm movement during the diecutting process. Borders are not recommended due to this.

A minimum of 3mm bleed is required.

[See cyan keyline].



**Combo 1+2** card size is 86mm x 54mm, tag size is 28.5mm x 54mm. [Overall size is 143mm x 54mm.]

All type, data and images must be at least 3mm away from the edge of the card.

Ensure drill hole area is kept clear of type, data and images.

[See magenta dotted line].

There may be up to 3mm movement during the diecutting process. Borders are not recommended due to this.

A minimum of 3mm bleed is required.

[See cyan keyline].

